

■ Getting started

- ◇ This cloning software is designed to perform data setting and cloning for the IC-F110S/F111S/F121S/F210S/F211S/F221S VHF/UHF FM TRANSCEIVERS.
- ◇ **HELP WINDOW:** Each item has a help window to describe functions and operation.

■ System requirements

To use this program, the following hardware and software are required:

- IBM PC/AT compatible computer
- RS-232C serial port
- Microsoft® Windows® 95/98/Me
- Intel Pentium® 100 MHz processor or faster
- At least 16 MB RAM
- At least 640 × 480 pixel display
- OPC-1122 CLONING CABLE (Cable adapter + DB9 Female /DB25 Male serial cable)

NOTE: Depending on your Windows system files, the PC may require rebooting. In this case, repeat the installation from the beginning.

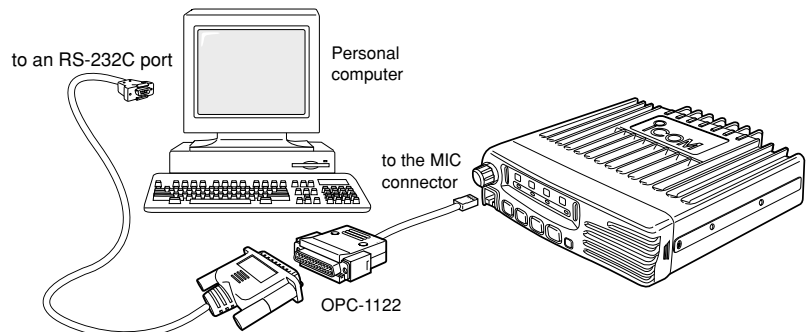
■ Software installation

◇ Installation

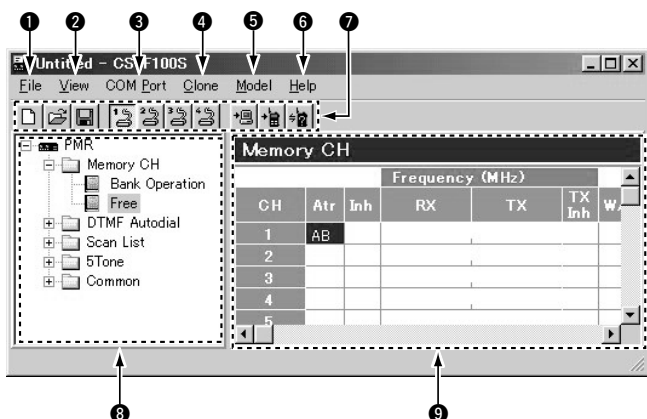
- ① Boot up Windows.
 - Quit all applications when Windows is running.
- ② Insert the disk into the appropriate CD drive.
- ③ Select 'Run' from the [Start] menu.
- ④ Type the setup program name with full path name, then press the [Enter] key. (e.g. D:\csf100S\setup [Enter])
- ⑤ Follow the prompts.
- ⑥ Enter the product ID number in the following manner.
 - ID number: 260301 - (6 digit Serial number)
 - e.g. the Serial number on the CD is 000001, enter "260301-000001" as the ID number.
- ⑦ Program group 'CS-F100S' appears in the 'Programs' folder of the start menu.

■ Connections

All cloning operations are performed from the computer's keyboard—the operation required on the transceiver side is:
Pushing and holding the power switch to turn power ON.



■ Screen description



① FILE MENU [File]

Used for saving memory channel contents, printing the pre-programmed information or exiting the program, etc.

② VIEW MENU [View]

- Displayed Font Size is selectable.
- Turn the toolbar indication ON or OFF.

③ COM PORT MENU [COM Port]

- Click to display the COM port setting dialog box.
- Set the COM port (RS-232C port) number properly.
- Set the transfer speed (Normal or High).

NOTE: 'Check the following' dialog box appears when the RS-232C serial port is not set correctly.

④ CLONING MENU [Clone]

Click to display cloning menu and cloning information dialog box.

⑤ MODEL MENU [Model]

Click to select LMR (2Tone) or PMR (5Tone/DTMF).

⑥ HELP MENU [Help]

Click to display help contents and cloning software revision information.

⑦ TOOL BAR

Short cut keys appear on the tool bar when clicking the tool bar function in the [View] menu.

⑧ TREE VIEW MENU

Select the item that you want to edit.

⑨ PROGRAM SCREEN

Displays the channel or editable item information.

■ Before starting the programming

Read all the transceiver cloning data into the PC before starting editing with this software. Otherwise the frequency data may not be cloned properly to your transceiver.

- Select the model type.
- LMR: Land Mobile Radio. 2Tone function available.
- PMR: Private Mobile Radio. 5Tone function available.

■ Memory CH

The 'Memory CH' window allows you to edit the channel information.

◆ Bank Operation/ Bank/ Free

- ① Click the desired cell, then right click to display the [Edit] menu and then click [Edit...Enter], or double-click the desired cell or data area in the memory channel list directory.
- ② Editable items; Bank/Free, Atr, Inh, RX/TX Frequency, TX Inh, W/N, RX/TX C.Tone, Text, Compander, TOT, RF Pwr, Lockout, Scan, etc.

/// **NOTE:** Program the RX frequency first, otherwise no setting can be done.

■ DTMF Autodial

◆ DTMF Autodial/ Setting

Program the DTMF Autodial Code, Emergency (LMR), Log/ID (LMR), and then set the DTMF timer, First Timer and * # Timer.

■ Scan List

◆ Scan List

Select the scan mode condition.

◆ Scan Setting

Set Stop Timer, Resume Timer, Power ON Scan and Auto CH Call (PMR).

■ 2Tone (for LMR only)

◆ Code CH

Set Freq. 1st/2nd, Tone Period 1st/2nd, Code Type, Group Call, LED, ANS, EXO, Beep, Auto TX, Stun and Scan items.

◆ RX Code Setting

Edit Notone Timer, Group Timer, EXO Timer, Beep Repeat Timer and Auto TX Timer items.

■ 5Tone (for PMR only)

◆ RX Code CH

Set items such as RX Code, ID Dec, LED, Emer Cancel, ABC, EXO, Beep, etc.

◆ RX Code Setting

Edit items such as Link A Timer, Compare Digit, ID Decode Timer, EXO Timer, etc.

◆ TX Code CH

Set TX Code and ABC Dec/Aud items.

◆ TX Code Setting

Edit items such as Long Tone Timer, Link R/1/2 Timer, Lead out Delay Timer, ABC Decode Timer, etc.

◆ Format

Edit Tone Period, Notone Timer and Tone Length items.

◆ User Tone

Edit Encode and Decode Low/High items.

■ Common

◆ Key & Display Assign

Set P0/1/2/3, Moni, Scan, Prio A and LP 0/1/2 for the programmable key assign. Set RF Power Selection for the display assign.

◆ Set Mode

Set Backlight, Beep, SQL Level and AF Min Level conditions.

◆ Common

Commonly set items such as Clone Comment 1/2, User Password, PWR ON Password, Transceiver Data Out, Timer A/B, Inactive Timer, etc.

◆ Expert

Expertly set items such as Fast/Slow Scan Timer, TX/RX DTCS Inverse, User CTCSS Freq(Hz), EmerSW ON/OFF Timer, etc.

NOTE: The above instructions are for reference only. Please refer to the HELP file of the cloning software for the function or setting details.

Microsoft and Windows are registered trademarks of Microsoft Corporation in the U.S.A. and other countries.

IBM is a registered trademark of International Business Machines.

Icom, Icom Inc. and the ICOM logo are registered trademarks of Icom Incorporated (Japan) in the United States, the United Kingdom, Germany, France, Spain, Russia and/or other countries.